

# INSTALLATION, CONFIGURATION AND OPERATION MANUAL

September/2016

# VMT-PROFIBUS

## PROFIBUS® PA CONFIGURATOR FOR ANDROID™ DEVICES



## COPYRIGHT

*All rights reserved, including translations, reprints, whole or partial reproduction of this manual, patent concession or model register of use/project.*

*No part of this publication may be reproduced, copied, processed or transmitted on any manner or any medium (photocopy, scanning, etc.) without the express permission of **Vivace Process Instruments Inc.**, not even for training or electronic systems.*

*PROFIBUS® is a registered trademark of the PROFIBUS International.*

*Android™ is a trademark of Google Inc.*

## IMPORTANT NOTE

*We have reviewed this manual with great care to maintain compliance with the hardware and software versions described herein. However, due to the dynamic development and version upgrades, the possibility of technical deviations cannot be ruled out. We cannot accept any responsibility for the full compliance of this material.*

*Vivace reserves the right to, without notice, make modifications and improvements of any kind in its products without incurring in any circumstances, the obligation to make those same modifications to products sold previously.*

*The information in this manual is frequently updated. Therefore, when using a new product, please check the latest version of the manual on the Internet through our website [www.vivaceinstruments.com](http://www.vivaceinstruments.com), where it can be downloaded.*

*You customer is very important for us. We will always be grateful for any suggestions for improvements as well as new ideas, which can be sent to the e-mail: [contato@vivaceinstruments.com](mailto:contato@vivaceinstruments.com) preferably with the title "Suggestions".*

## SUMMARY

<b>1</b>	<b>INTRODUCTION.....</b>	<b>7</b>
1.1.	VMT-PROFIBUS APPLICATION OVERVIEW .....	7
1.2.	PROFIBUS® DDL.....	7
<b>2</b>	<b>PACKAGE CONTENTS.....</b>	<b>11</b>
<b>3</b>	<b>ANDROID™ DEVICE REQUIREMENTS .....</b>	<b>11</b>
<b>4</b>	<b>VCI10-BP INTERFACE.....</b>	<b>12</b>
4.1.	CONNECTING .....	12
4.2.	BATTERY.....	13
4.3.	TAG.....	13
4.4.	TECHNICAL SPECIFICATIONS .....	14
4.5.	MECHANICAL DIMENSIONS .....	14
<b>5</b>	<b>INSTALLATION .....</b>	<b>15</b>
5.1.	VMT-PROFIBUS .....	15
5.2.	INSTALL-DDL-PROFIBUS .....	15
5.3.	UNINSTALLING THE APPLICATION .....	17
<b>6</b>	<b>LICENSE.....</b>	<b>18</b>
<b>7</b>	<b>SEARCHING FOR PROFIBUS® PA DEVICE.....</b>	<b>21</b>
<b>8</b>	<b>VMT-PROFIBUS APPLICATION FUNCTIONS .....</b>	<b>24</b>
8.1.	MENU.....	24
8.2.	READING PARAMETERS .....	25
8.3.	PARAMETER WRITING .....	25
8.4.	METHODS .....	26
8.5.	COMMUNICATION ERROR .....	27
8.6.	TYPE OF VARIABLES.....	28
8.7.	MONITORING.....	28
8.8.	EXIT .....	29
8.9.	ABOUT.....	29
<b>9</b>	<b>ORDERING CODE.....</b>	<b>30</b>
<b>10</b>	<b>WARRANTY .....</b>	<b>31</b>

10.1. GENERAL CONDITIONS.....	31
10.2. WARRANTY PERIOD .....	31
<b>APPENDIX .....</b>	<b>32</b>

## WARNING

*It is extremely important that all safety instructions, installation and operation in this manual are followed faithfully. The manufacturer is not liable for damage or malfunction caused by improper use of this equipment.*

*It should strictly follow the rules and good practice relating to installation, ensuring correct grounding, noise insulation and good quality cables and connections in order to provide the best performance and durability to the equipment.*

*Special attention must be considered in relation to installations in hazardous and hazardous areas, where applicable.*

## SAFETY PROCEDURES

- *Appoint only skilled people, trained with process and equipment;*
- *Install equipment only in operation compatible areas, with the proper connections and protections;*
- *Use proper safety equipment for any handling device in field;*
- *Turn area power off before equipment installation.*

## SYMBOLOLOGY



*Caution - indicates risk or error source*



*Important Information*



*General or Specific Risk*



*Electrical Shock Danger*

## GENERAL INFORMATION



*Vivace Process Instruments ensures the operation of the equipment, according to the descriptions contained in its manual, as well as technical characteristics, not guaranteeing their full performance in particular applications.*



*The operator of this equipment is responsible for observing all aspects of safety and prevention of accidents applicable during the execution of the tasks in this manual.*



*Failures that might occur in the system, causing damage to property or injury to persons, shall additionally be prevented by external means to a safe outlet for the system.*



*This equipment must be used only for the purposes and methods proposed in this manual.*

# 1 INTRODUCTION

**VMT-PROFIBUS** (*Vivace Mobile Tool PROFIBUS*) is a versatile PROFIBUS® PA configurator for Android™ platform, a member of the family of *Vivace Process Instruments* applications.

Working with VCI10-BP interface provides a complete solution to access and management of field devices compatible with PROFIBUS PA protocol. It allows user configuration, calibration, maintenance and monitoring of PROFIBUS PA devices.

VMT-PROFIBUS uses information described in PROFIBUS device DDL file (Device Description Language) to determine the content which will be displayed on each screen, which variables can be edited, which procedures must be executed for calibration, setup and maintenance.

It was designed with the latest technologies (Android™), ensuring reliability, high performance and robustness.

Android platform is widely used worldwide. Smartphones and tablets feature a friendly and excellent GUI screen, so user can easily configure even the most complex equipment. The main advantage of Android™ platform is its extensive use as personal and/or work tool in many areas.

This manual provides detailed instructions on VMT-PROFIBUS application and also about VCI10-BP hardware, which interfaces VMT-PROFIBUS with the PROFIBUS PA network.

For questions about this product not contained in this manual, please contact *Vivace Process Instruments* through the website [www.vivaceinstruments.com.br](http://www.vivaceinstruments.com.br).

## 1.1. VMT-PROFIBUS APPLICATION OVERVIEW

VMT-PROFIBUS application has an intuitive graphical interface, thus, allowing user to configure, calibrate, monitor process variables and diagnose status of PROFIBUS PA devices in a quick and easy way. VMT-PROFIBUS is based on DDL (Device Description Language) and accesses device parameters in a standard mode, as defined by its manufacturer.

VMT-PROFIBUS performs communication with PROFIBUS PA devices using a "PROFIBUS Class 2" interface that enables real-time access between VMT-PROFIBUS and the PROFIBUS PA device.

There is a wide variety of " PROFIBUS Class 2" on the market but only VCI10-BP interfaces from *Vivace Process Instruments* are compatible with the VMT-PROFIBUS. Details about these interfaces can be found at "VCI10-BP Interface" topics.

## 1.2. PROFIBUS® DDL

Device Description Language (DDL) is a language for modeling field device behavior. DDL allows applications (host) to configure, calibrate and troubleshoot field device problems without any prior knowledge of the device, providing full access to all properties and capabilities of any device compatible with PROFIBUS® protocol.

Through text files called DD (Device Description), hosts can access the standardized specific device information, including variables, menus, commands and methods, also allowing to describe the structure and layout of menus user will see when communicating with the equipment.

DD files are developed by the manufacturer of the device and allow menus, methods and parameters to be presented as manufacturer desires.

Check "*Installation*" topic to learn how DDL is installed on VMT-PROFIBUS and its directory structure. Visit [www.vivaceinstruments.com.br](http://www.vivaceinstruments.com.br) to check which devices are integrated into the VMT-PROFIBUS.

DDL structure uses a group of elements. Each element has an essential role in the organization, data exchange and presentation of data to user, as described below:

**Variable:** Describes information about device parameters. For example: measured value, operating parameters and information on the device. Typically, the device has a set of configuration variables relating to process and status variables used in methods.

**Menu:** Describes a structure of how the variables, methods and sub-menus should be displayed. Typically, DDL presents a main menu and splits variables and methods in several submenus.

**Commands:** It is a data packet used to transfer information between host and PROFIBUS® PA device.

**Method:** It is a series of steps performed sequentially while performing any task on the device. For example, calibration and configuration of lower and upper limits on device. The sequence of screens presented during the executing method will depend on user interaction and device internal information.

If the method is aborted by the user, it should allow device conditions will be the same as before method execution.

To perform the method, proceed with the following steps:

- Choose the menu where method is present and select it;
- Click OK to move to the next sequence dialogue;
- Some methods ask user to enter values;
- When available and necessary, click *abort* button to cancel the method execution.



## 2 PACKAGE CONTENTS

Make sure all the following items are included in the package (for VCI10-BP):

- VCI10-BP Interface;
- USB to micro USB converter;
- USB Charger;
- 2 batteries.

VMT-PROFIBUS application and INSTALL-DDL-PROFIBUS must be downloaded in [www.vivaceinstruments.com.br](http://www.vivaceinstruments.com.br). *Vivace Process Instruments* ensures the latest version of the application will be updated on the website.

## 3 ANDROID™ DEVICE REQUIREMENTS

Minimum system requirements for Android™ device:

- Ram Memory: 1 GB (minimum);
- ROM Memory: 2 GB (minimum);
- Optional SD Card;
- Android™ 4.3 (minimum).

## 4 VCI10-BP INTERFACE

VCI10-BP is a "PROFIBUS® Class 2" with the function to interface smartphones/tablets as well as Windows® tools with PROFIBUS® network via Bluetooth®, allowing data exchange between the parties according to the PROFIBUS® protocol.

Its compact size and low-power consumption make VCI10-BP an ideal solution for PROFIBUS® protocol. Its robustness makes it a suitable tool for any plant or factory, ensuring easy user handling.

### 4.1. CONNECTING

VCI-10-BP interface is connected to the smartphone/tablet and Windows® devices via the Bluetooth® connection and PROFIBUS® network through two clips, as shown in Figure 4.2.



Figure 4.2 –VCI10-BP connection.

Figure 4.1 –VCI10-BP interface.

The interface connection is resumed in only one action:

- Plug the clips on the PROFIBUS PA bus.

Check if VCI10-BP configuration on VMT-PROFIBUS is correct. See figure 7.1 on “*SEARCHING PROFIBUS PA DEVICE*”.

If VMT-PROFIBUS application is already configured and DDL files are installed, user can immediately start communicating with PROFIBUS PA device.

## 4.2. BATTERY

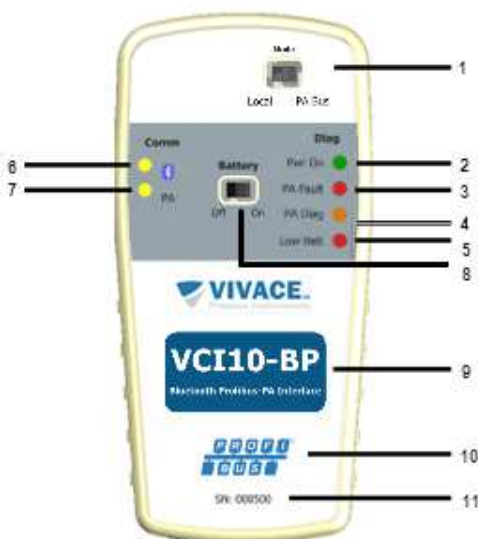
VCI10-BP requires batteries, which are provided by Vivace with the interface. Before using the interface for the first time, execute a full charge to battery. After the full charge of batteries, interface will operate for about 4 hours.

To charge the battery, use the accessory "USB cable converter to micro-USB." Plug the cable into VCI10-BP interface (micro-USB) and into the PC's USB port. Note that the "Charging" LED at VCI10-BP interface flashes during charging, indicating charge process.

If the battery is discharged, VMT-PROFIBUS will display the message "Communication Error" when communicating with PROFIBUS® PA device. If application is on home screen of VMT-PROFIBUS, user will not be able to connect to VCI10-BP interface or even find PROFIBUS® PA devices.

## 4.3. TAG

VCI10-BP has an identification tag attached to its front. See table 4.1, for the specification of each tag item.



LABEL DESCRIPTION	
1	Selects local or remote mode
2	Interface circuit powered by batteries
3	Overcurrent on PA side
4	Cyclic diagnostic event on PA network
5	Low battery voltage (LED on)
6	Bluetooth communication
7	Profibus-PA communication
8	Battery on or off
9	Interface model
10	Communication protocol
11	Interface serial number

Table 4.1 Description of the tag of VCI10-BP.

Figure 4.3 – Tag VCI10-BP.

#### 4.4. TECHNICAL SPECIFICATIONS

The main technical and physical characteristics of the interface are listed in Table 4.2. They are important references that should be analyzed before use.

Power Supply	Batteries (7.2 V)
Output Voltage	19.5 Vdc (@ 20 mA load); 21 Vdc (open circuit)
Communication Protocol	IEC 61158-2 Standard; 31.25 kbits/s
Classified Area	Not Intrinsically Safe
Environment Temperature Limits	0 to 50°C @10-90 RH (no condensation)
FDT/DTM Compatibility	Yes
Operational Systems	Win XP, Win 7, Win 8, Win 8.1, Win 10 (32 and 64 bits)
Profibus-PA Bus Connection	Bluetooth connection for HOST and clip probes for PA side (1.0 m)
Dimensions / Approximated Weight	135 x 65 x 25 mm (A x L x P) / 70 g

Table 4.2 - Technical Data of VCI10-BP.

\*\* 1500 Vac between the field device and Android device when the field device is not being powered interface.

#### 4.5. MECHANICAL DIMENSIONS

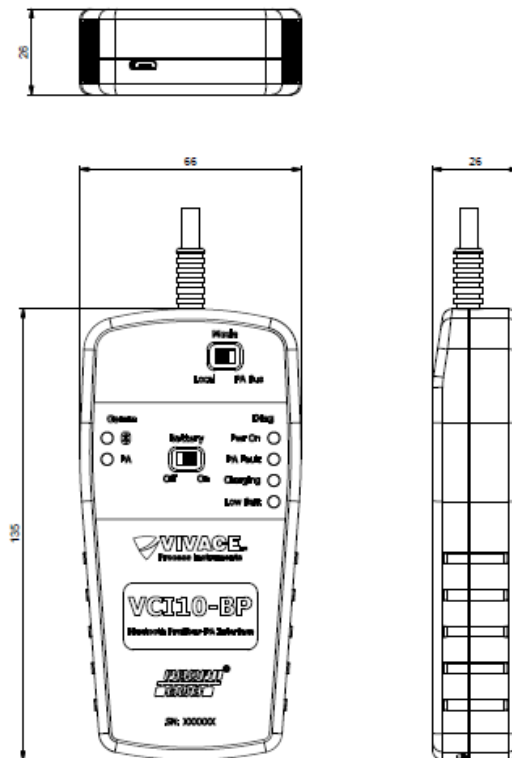


Figure 4.4 - Mechanical dimensions of VCI10-BP.

## 5 INSTALLATION

To use VMT-PROFIBUS application, please install:

- VMT-PROFIBUS
- INSTALL-DDL-PROFIBUS



Both are not available in Play Store and need to be installed manually.

### 5.1. VMT-PROFIBUS

The following steps show how to install VMT-PROFIBUS manually.

- Copy file "VMT-PROFIBUS.apk" to your Android™ device. It is recommended the directory "/ storage / emulated / 0 / Download";
- In Android™ device, open a file browser. For example: "MyFiles";
- Navigate to the directory where you saved the file in the first step;
- Click the "VMT-PROFIBUS.apk" file;
- A message appears asking if you wish to install application. Select "Install" option". If the option "unknown sources" is disabled on the Android device, a configuration screen will be shown in order user can enable it.
- After installation, press "Open" to run the application;

### 5.2. INSTALL-DDL-PROFIBUS

The INSTALL-DDL-PROFIBUS application is used to install the DDL files of PROFIBUS® device.

To install the application, follow the same steps described in the previous section, using the file "INSTALL-DDL-PROFIBUS.apk" instead of "VMT-PROFIBUS.apk".

After installation, press "Open" to run the application and the following screen appears:

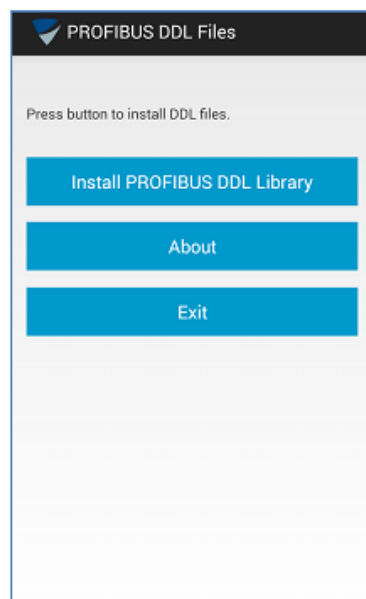


Figure 5.1 – PROFIBUS DDL Installation.

By clicking at "Install PROFIBUS DDL Library", the files relating to the device DDLs will be integrated into the VMT-PROFIBUS at "Vivace/Library/PROFIBUS" directory. Note that the file will be installed in the directory with the corresponding identification number of the manufacturer.

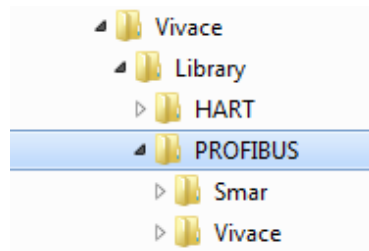


Figure 5.2 –DDL topology directory.

If installation is successfully completed, the following message will appear: *"Installation was completed successfully!"* (Figure 5.3). Otherwise, user will receive a message *"Error in DDL Install Files!"* (Figure 5.3). If an error occurs, check for free space on your Android™ device.

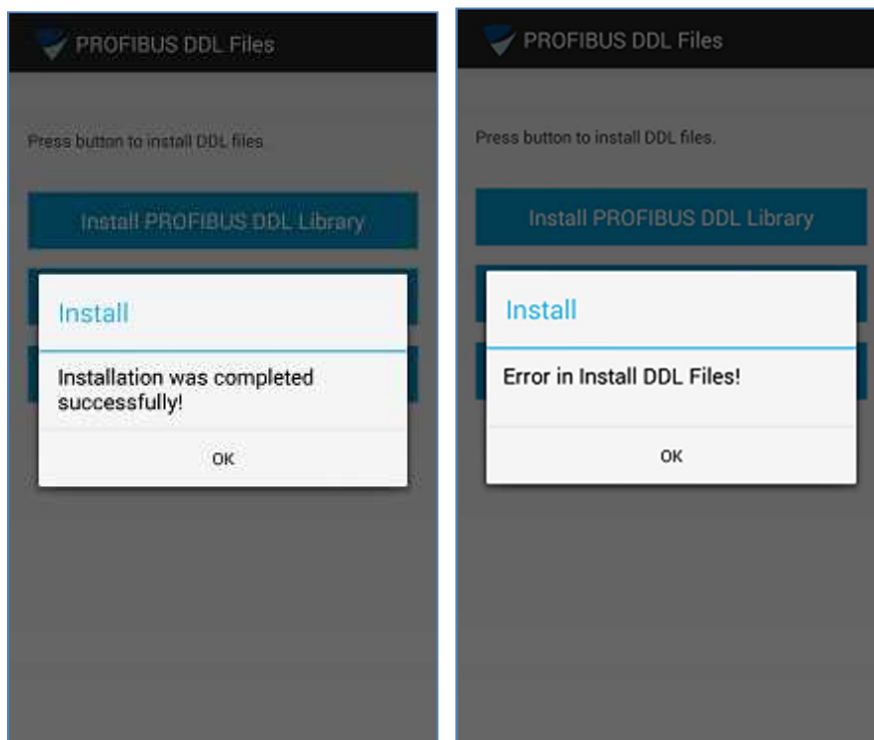


Figure 5.3 – DDL Installation message

This procedure must be performed whenever you need to update the DDL PROFIBUS® library. However, note that a new update library version requires uninstalling the current version. For information about the version of this application, click the "About" (Figure 5.4) button. It is possible to obtain the DDL list installed for each version of this application on our website [www.vivaceinstruments.com.br](http://www.vivaceinstruments.com.br).



Figure 5.4 – About of DDL PROFIBUS installation.

If the device you want to communicate is not in the installed products list, please contact *Vivace Process Instruments* for information about how to add the desired device.

The "Exit" button closes the application.

### 5.3. UNINSTALLING THE APPLICATION

To uninstall VMT-PROFIBUS application and INSTALL-DDL-PROFIBUS library, perform the following steps:

- Enter the Android™ Application Manager screen;
- Select the "VMT-PROFIBUS" application;
- Select the "Uninstall" option;
- Select the INSTALL-DDL-PROFIBUS application;
- Select "Uninstall".

## 6 LICENSE

The application license release is required during the first use of VMT-PROFIBUS. Enter option "License" from the pop-up menu on VMT-PROFIBUS home screen (Figure 6.1) and send to *Vivace Process Instruments* via email (contato@vivaceinstruments.com.br) "Code 1" and "Code 2" for the register key.

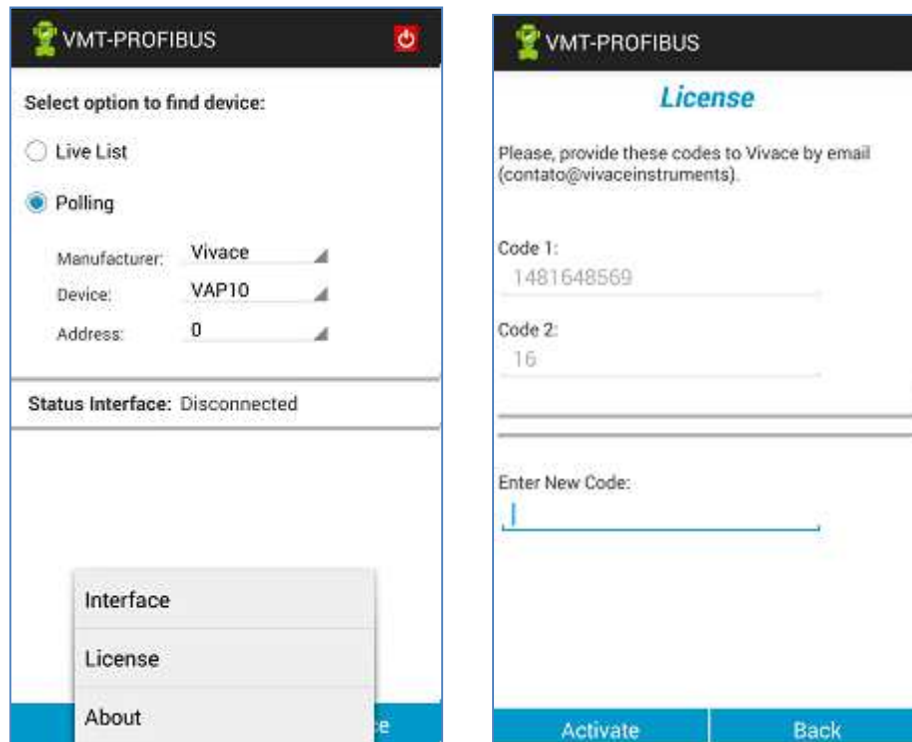


Figure 6.1 –VMT- PROFIBUS license screen.

Use as email subject "License VMT-PROFIBUS" and on email body the company name, contact and the codes.

The information will be processed and *Vivace Process Instruments* will send the license to the customer via email, after generating the registration key.

After receiving the register key, re-enter license screen, type the registration key in "Enter New Code" field and click "Activate" button. After registration, message "License Has Been activated" (Figure 6.2) will appear. Otherwise, user will receive the message "Code is wrong!" (Figure 6.2) and the activation process should be performed again.



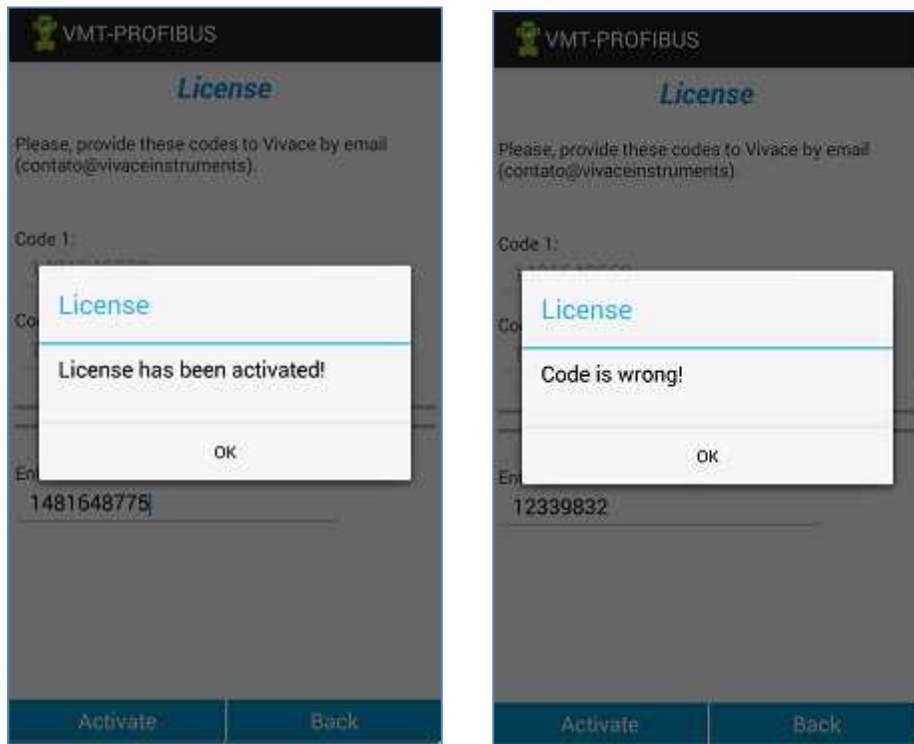


Figure 6.2 Success and error messages during license registration.

In order to register VMT-PROFIBUS application license, it is necessary to install DDL files (see the topic Installation). If the files are not installed, the following message will be displayed on register attempt: "It is necessary to install the DDL files" (Figure 6.3).

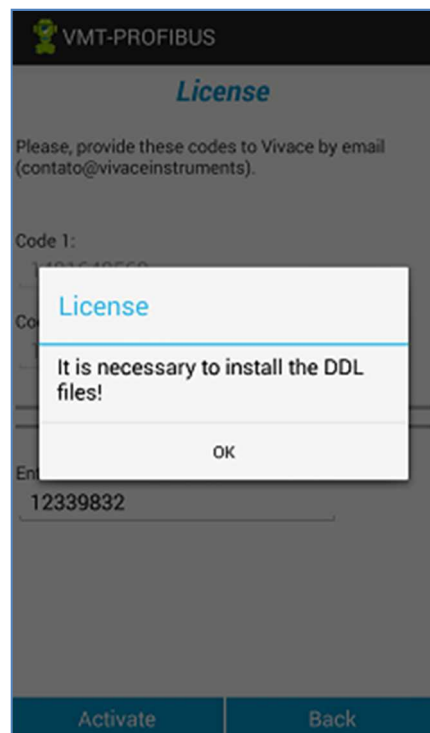


Figure 6.3 – Message for not installed DLL

If the license registration has not been executed correctly, the message "License is not valid" (Figure 6.4) will appear in the application and user will not be able to proceed.



Figure 6.4 – Message of license not activated.

In case of difficulties in the license activation process, please contact *Vivace Process Instruments*.

## 7 SEARCHING FOR PROFIBUS® PA DEVICE

Before using VMT-PROFIBUS, make sure VCI10-BP configurations are correct. Enter the option "Interface" from the pop-up menu of VMT-PROFIBUS home screen to check this.

"Mode" parameter indicates if VCI10-BP will be used on benchwork (Local), or on PROFIBUS PA network (Network). "Mode" jumper on VCI10-BP must be select for the appropriate use (item 4.3 Label).

"VCI10-BP Address" parameter indicates the address VCI10-BP will use on PROFIBUS network when working in "Network" mode.

"Slot Time" parameter indicates the maximum time VMT-PROFIBUS awaits for VCI10-BP response after sending a message. The default value for this parameter is 5000 ms. Usually this value is sufficient for a PROFIBUS PA network with 32 devices. User should adjust this parameter only when observes unsuccessfully results for read and write actions on PROFIBUS PA device.

Code to be entered in "Interface Code" parameter can be found in the back of interface batteries cover. This code also appears on the list for identified Bluetooth devices on Android device. The Bluetooth identification name for VCI10-BP interface is composed by "BP-" + Interface Code.

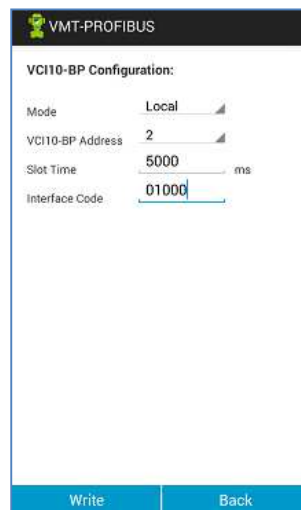


Figure 7.1 – Selecting the interface.

To communicate with the VCI10-BP interface you need to pair the interface with the Android™ device. Please, go into the Android™ device Bluetooth configuration screen, enable the Bluetooth communication and wait the Android™ device to find the VCI10-BP interface and then, after found it, click on it to pair. A random key will be displayed. Once paired, it is not necessary to perform this procedure again.

Before searching a PROFIBUS® PA device, make sure the interface is connected to the PROFIBUS® PA network and the battery is *On*.

Start VMT-PROFIBUS using the icon on the Android™ home screen.

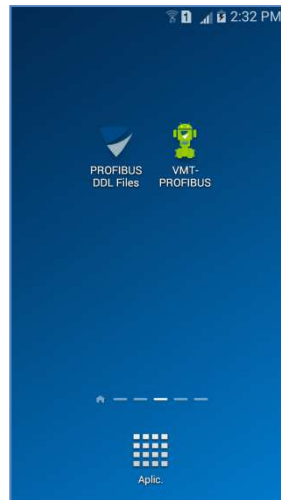


Figure 7.2 – VMT Application icon.

Before performing communication with the PROFIBUS® PA device it is necessary to connect the VMT-PROFIBUS application with the interface by clicking the "Connect" button. Note that the state of the interface ("Status Interface") should change from "Disconnected" to "Connected". If the message "Interface is disconnected!" (Figure 7.3) appears when using VCI10-BP, make sure Bluetooth Android™ device is active and the interface is paired (the interface appears with the BP- name + interface code). If the problem persists, check battery interface.

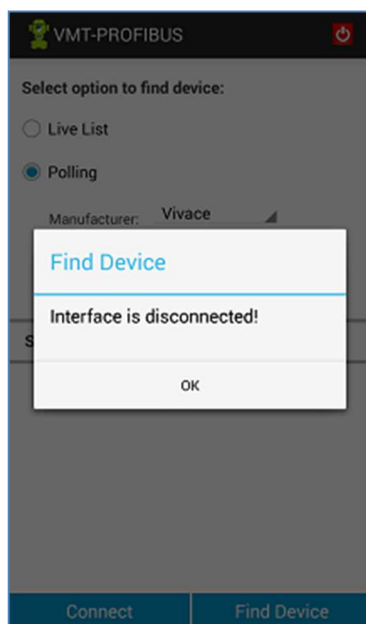


Figure 7.3 – Disconnected Interface Message.



Figure 7.4 – Screen showing connected Interface Status.

After status "Connected" on interface (Figure 7.4), it is possible to start searching for PROFIBUS® PA device.

VMT-PROFIBUS provides two ways to search PROFIBUS® PA device (Figure 7.4):

- Live List: Searches for all devices connected to PROFIBUS PA network. Usually this option is used when user does not know the PROFIBUS PA device address.



*Besides several devices can be found on the network, only one will be able to communicate with VMT-PROFIBUS at a time.*

- Polling: Searches PROFIBUS PA device according its name and address.

Clicking on "Find Device" button, a progress bar should appear (Figure 7.5), indicating the search process for device. If the device is not found, "Device not found" message (Figure 7.5) appears. Make sure the PROFIBUS® PA device is correctly installed and the information are correct in VMT-PROFIBUS.

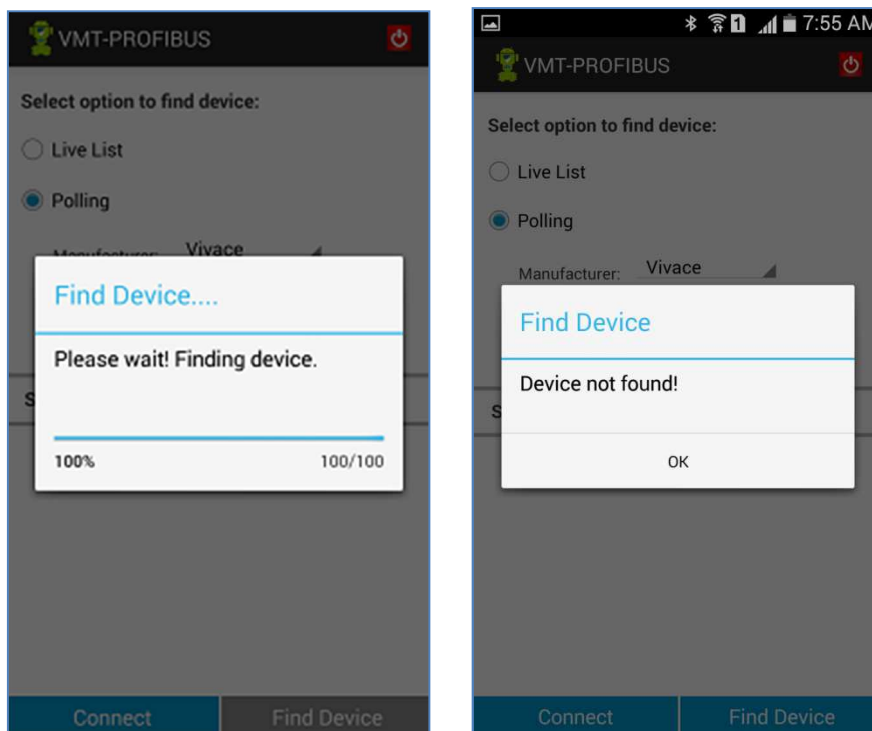


Figure 7.5 – Searching PROFIBUS® PA device.

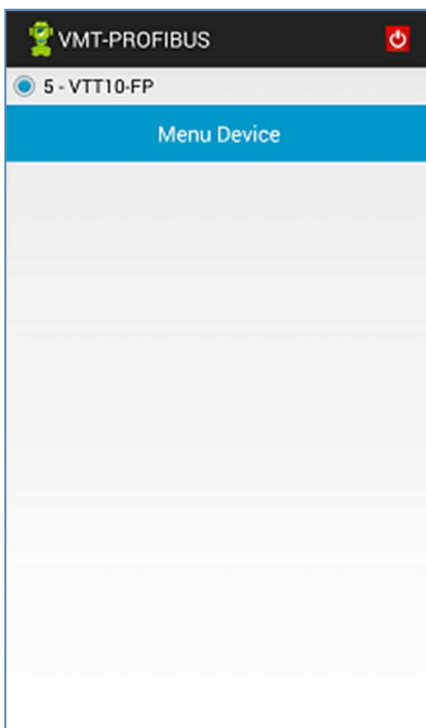


Figure 7.6 –Live List Screen.

All PROFIBUS® PA devices found will be listed in the Live List (Figure 7.6), containing the address and device model. To browse a device, simply select it in the list.

After device is identified, VMT-PROFIBUS finds the corresponding DDL and loads the file. If the DDL is not in the VMT-PROFIBUS library the following message will be shown: "Device Database not found".

## 8 VMT-PROFIBUS APPLICATION FUNCTIONS

The structure of VMT-PROFIBUS application was designed to be user friendly and easy to use, providing excellent performance. Following you can find the descriptions of the main functions of VMT-PROFIBUS.

### 8.1. MENU

When selecting the device in the Live List, the DDL file is loaded, as the manufacturer and model. The VMT-PROFIBUS display the main menu with the content defined in the "root-menu" PROFIBUS DDL of the device.

Menus are displayed using a tree architecture, making navigation easier, intuitively. The general layout and navigation screens are common for all devices, only changing the content, as defined in the DDL. The main menu typically consist of a series of buttons that lead to various sub-menus, methods and parameters.

The menus and buttons are represented by methods describing the label, with methods having a \* at the end of the label. The parameters are displayed using label, along with the value and unit (if any).

Selecting the menu button, the corresponding sub-menu will open. Selecting the method button, the corresponding action is taken.

Figure 8.1 shows an example of a main menu, which is the temperature transmitter PROFIBUS® PA VTT10-FP.

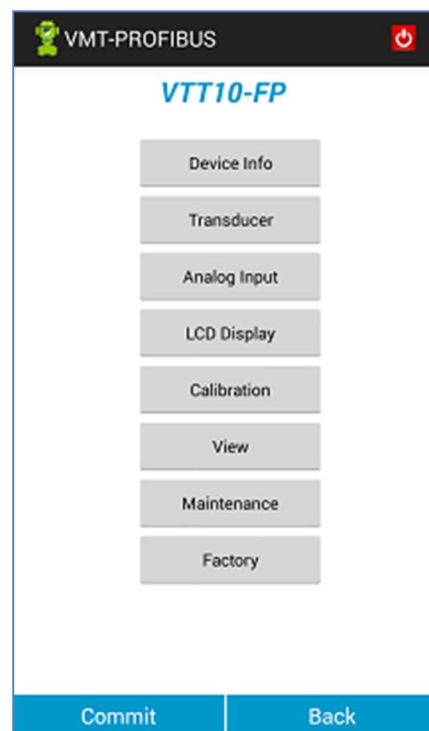


Figure 8.1 – Main screen - VTT10-FP.

To navigate to a different menu, simply select the desired menu. To return to the previous menu, press "Back" button. Use menus to access all the data exactly as defined by device DDL, as described by the manufacturer.

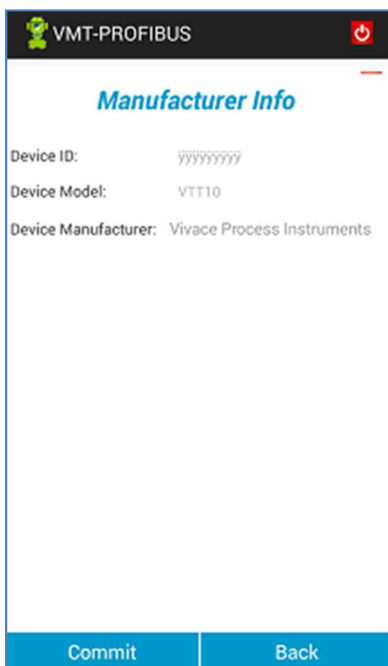
## 8.2. READING PARAMETERS

Parameter reading is executed in two situations:

- On screen opening: all screen parameters are read;
- When writing a parameter and a corresponding reading command exists.

## 8.3. PARAMETER WRITING

The parameters that can be written are presented with the value in black, while the read-only parameters are displayed in gray (Figure 8.2). To change the value of the parameter in the PROFIBUS® PA device or locally on VMT-PROFIBUS (as type parameter class) click the parameter, change its value and then click on the "Commit" button (at the bottom of the screen).



Note that the parameter color will turn yellow (Figure 8.3) and after the completion of the writing process, will be back to black. During the writing process, the message "Please wait! Writing and reading data of the device" (Figure 8.3) appears.

Figure 8.2 – Screen with parameter read-only.

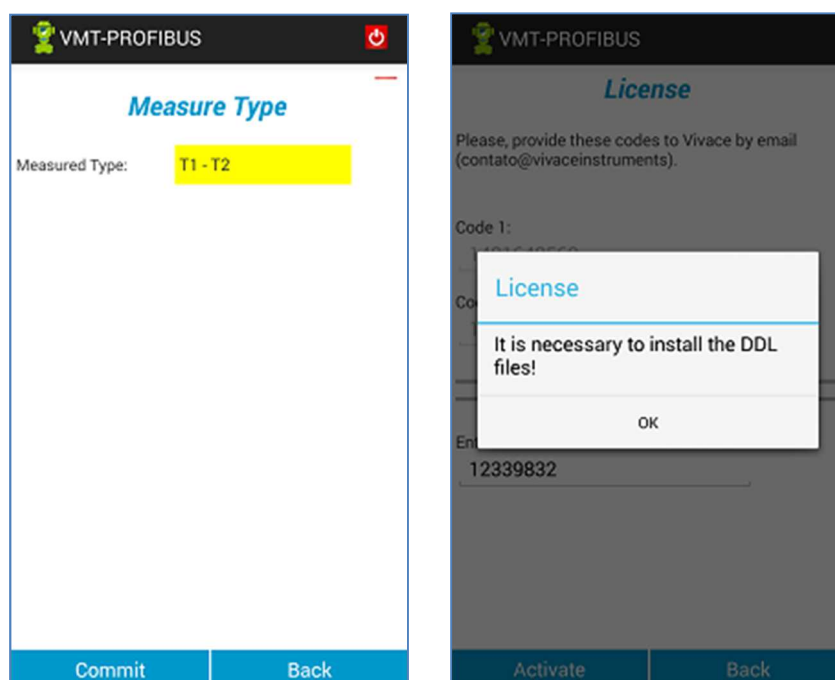


Figure 8.3 – Writing a parameter.

If write was not successful, the parameter value will return to the same as it was before the write operation. If write occurs successfully, the parameter value will remain the same entered by user. Only the parameters changed by user are written to device.

If there is a corresponding reading PROFIBUS® command, after writing a parameter, the reading of the changed parameter will be performed. To check if it was successful, click "Back" button to return to previous menu and then by re-entering the screen, all values will be updated.

## 8.4. METHODS

Methods run through a sequence of screens and messages in order to perform some task. All methods in VMT-PROFIBUS appear on the menus with the \* symbol in front of the label method. Select the method you want to show the related operation screen (See topic DDL PROFIBUS®).

Figures 8.4, 8.5 and 8.6 show some screens methods.

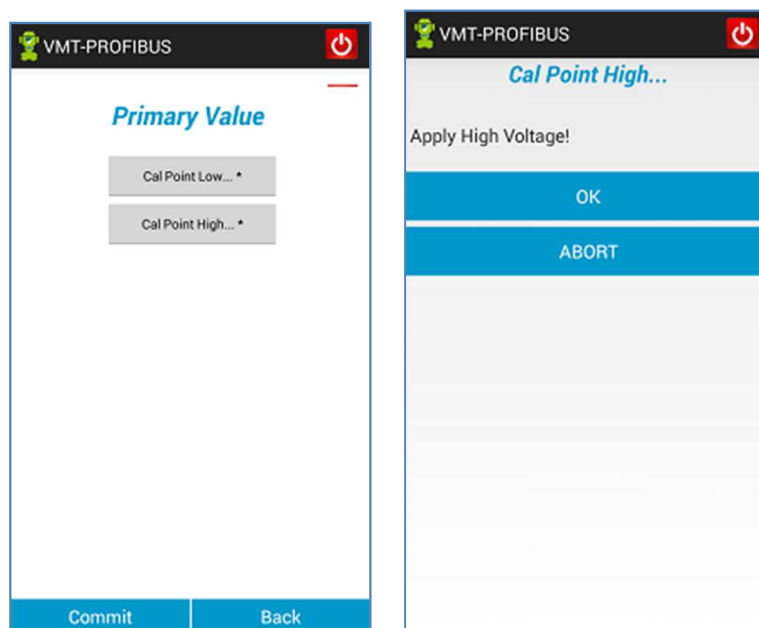


Figure 8.4 – Screen of a method.

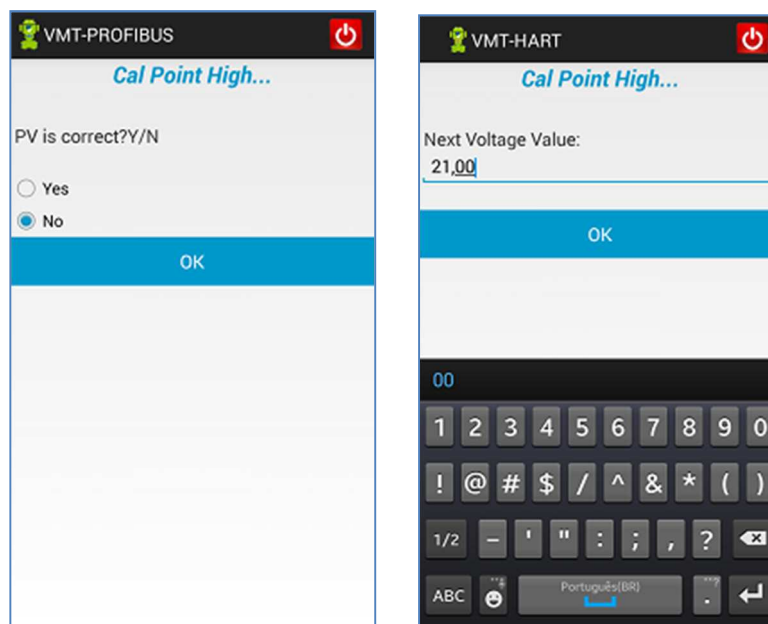


Figure 8.5 – Screen of a method.



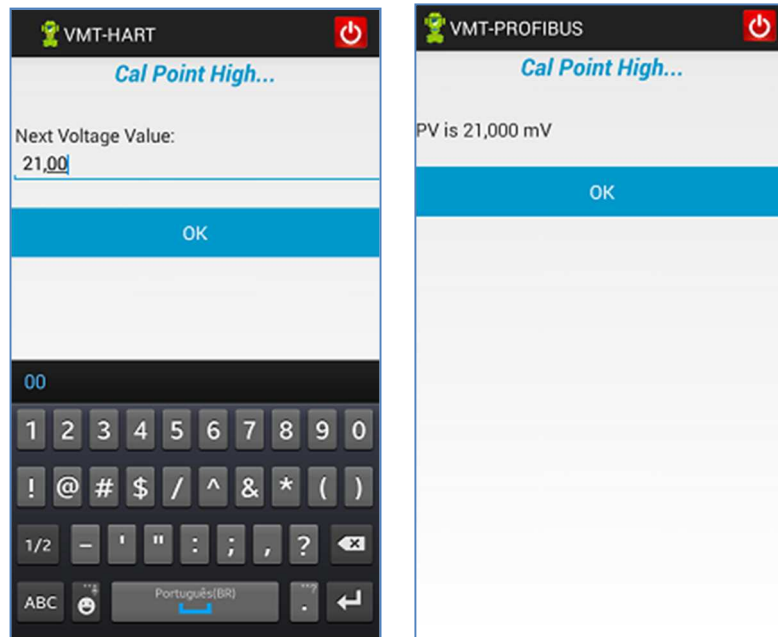


Figure 8.6 – Screen of a method.

## 8.5. COMMUNICATION ERROR

To ensure better performance in the communication, VMT-PROFIBUS sends up to three times the same PROFIBUS® command to the device (if there is no reply or if the response is not valid).

If there is no success after these attempts, VMT-PROFIBUS displays an error message (Figure 8.7).

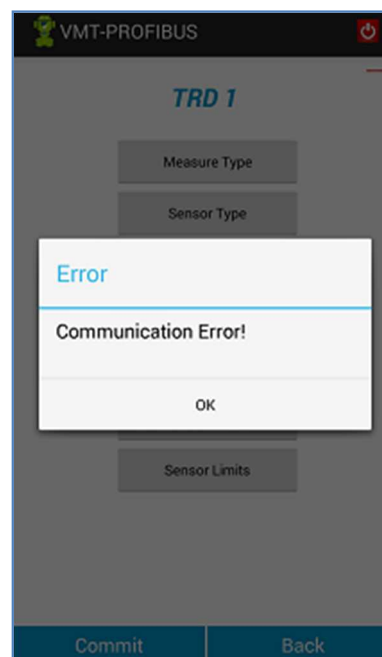
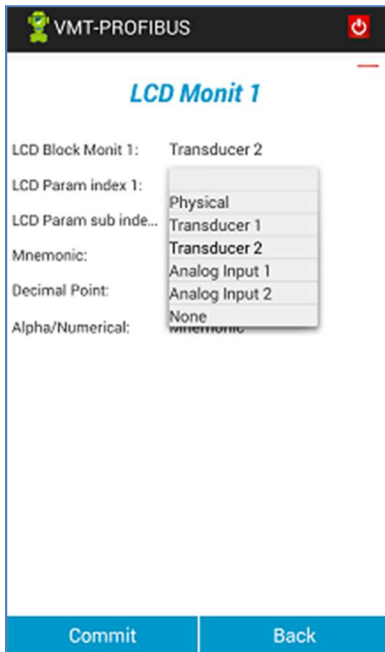


Figure 8.7 – Message of communication error

Messages will continue to appear until the communication is re-established.

## 8.6. TYPE OF VARIABLES



There are three types of variables presented by VMT-PROFIBUS that are defined in the DDL, as follows:

- Numeric (integer or floating point)
- Text (ASCII, ASCII Packed)
- Enumerated (A list of corresponding string options with a list of values). Figure 8.8.

If the parameter type is numeric or text, the keyboard of Android™ device will allow parameter change.

Figure 8.8 – Enumerated list.

## 8.7. MONITORING

It is common for manufacturers to have on the DLL of the device a monitoring menu, where there are parameters with DYNAMIC class. The VMT-PROFIBUS identifies this type of class and periodically sends PROFIBUS commands to update those parameters on the screen.

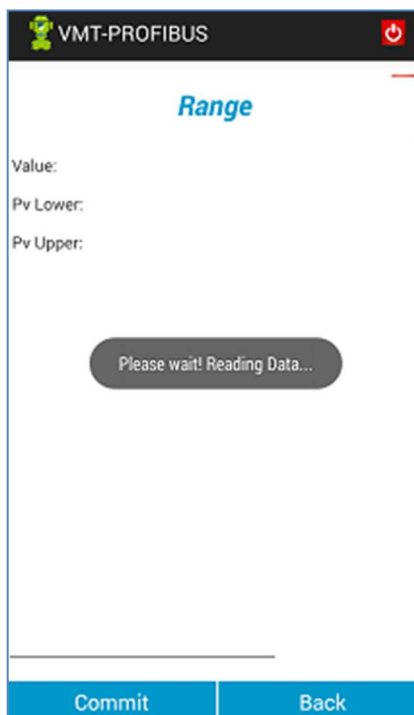


Figure 8.9 – Monitoring screen.

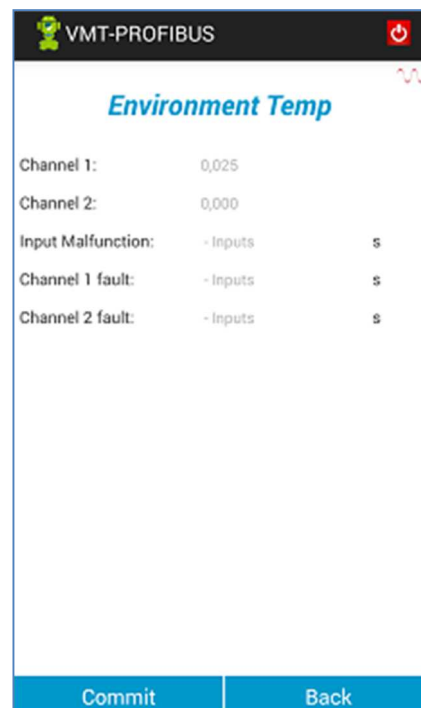



Figure 8.10 – Transmission icon.

At the time of transmission of the PROFIBUS message by VMT-PROFIBUS, the icon that appears at the top of the screen is changed to the waveform (Figure 9:12).

## 8.8. EXIT

---

To exit VMT-PROFIBUS application just click button , on top of the application screen.

This will only **close** the application, but does not **end** the application, which is still running in the background.

## 8.9. ABOUT

---

In the pop-up menu from the home screen of VMT-PROFIBUS is the About option.

About informs the version of VMT-PROFIBUS application and also important information about copyright. To return to the home screen VMT-PROFIBUS, click the "OK" button.

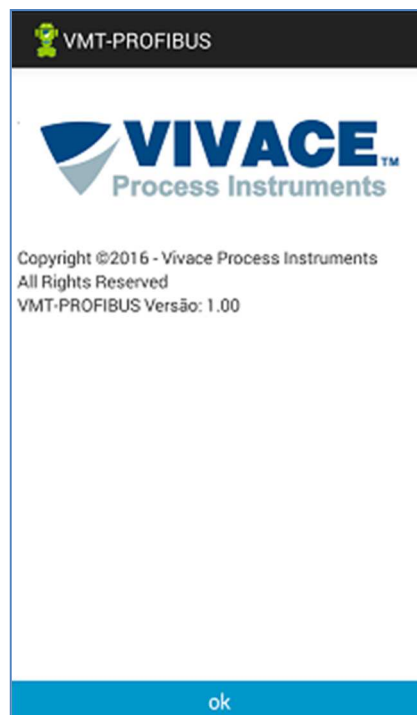


Figure 8.11 –VMT-PROFIBUS About screen.

## 9 ORDERING CODE

### VCI10 *Communication Interface*

Communication Type	<b>U</b>	USB
	<b>A</b>	ANDROID
	<b>B</b>	BLUETOOTH
Communication Protocol	<b>H</b>	HART
	<b>P</b>	PROFIBUS
Configuration Accessory	<b>0</b>	NOACCESSORY
	<b>1</b>	TABLET
	<b>2</b>	NOTEBOOK
	<b>3</b>	SMARTPHONE

Ordering Code Example:

VCI10                    - B   P - 0

## 10 WARRANTY

### 10.1. GENERAL CONDITIONS

*Vivace* ensures its equipments from any defect on manufacturing or component quality. Problems caused by misuse, improper installation or exposure to extreme conditions are not covered by this warranty.

The user can repair some equipments by replacing spare parts, but it is strongly recommended to forward it to *Vivace* for diagnosis and maintenance in cases of doubt or impossibility of correction by the user.


For details about the product warranty, see the general term warranty on Vivace website: [www.vivaceinstruments.com.br](http://www.vivaceinstruments.com.br).

### 10.2. WARRANTY PERIOD

*Vivace* ensures the ideal operating conditions of their equipment by a period of two years, with full customer support regarding to installation, operation and maintenance for the best use of the equipment.

It is important to note that even after warranty period expires, *Vivace* assistance team is ready to assist customer with the best support service, offering the best solutions for the installed system.

## APPENDIX

		<b>FSAT</b>	
		<b>Technical Analysis Solicitation Form</b>	
Company:		Unit/Department:	Shipping Invoice n°:
Standard Warranty: ( )Yes ( )No		Extended Warranty: ( )Yes ( )No	Buying Invoice n°:
<b>COMMERCIAL CONTACT</b>			
Complete Name:		Position:	
Phone and Extension:		Fax:	
e-mail:			
<b>TECHNICAL CONTACT</b>			
Complete Name:		Position:	
Phone and Extension:		Fax:	
e-mail:			
<b>EQUIPMENT DATA</b>			
Model:		Serial Num.:	
<b>PROCESS INFORMATION</b>			
<b>Environment Temperature (°C)</b>		<b>Work Temperature (°C)</b>	
Min:	Max:	Min:	Max:
Operation Time:		Fail Date:	
<b>FAIL DESCRIPTION: (Here user should describe in detail the observed behaviour of product, frequency of fail occurrence and repeatability. Also, should inform operational system version and a quick description of control system architecture where the equipment was installed.</b>			
<b>ADDITIONAL OBSERVATION:</b>			

